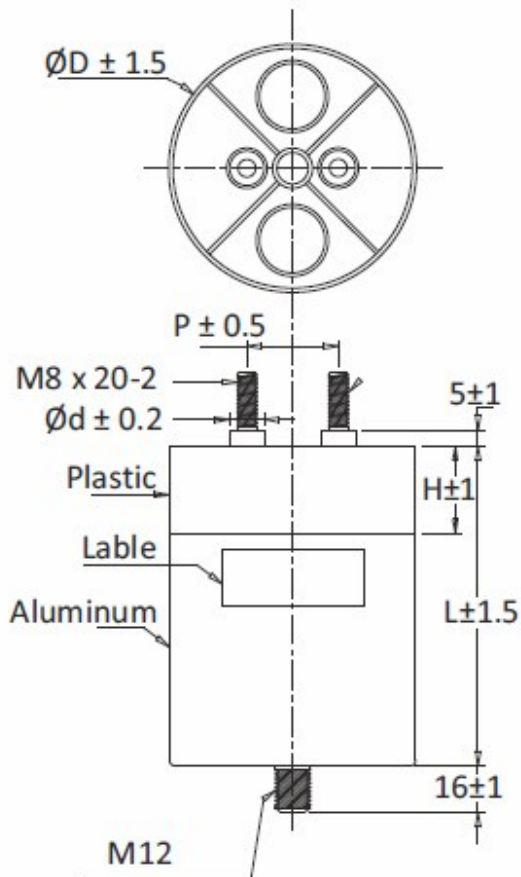


干式结构, 铝壳封装, 螺纹式端子引出直流滤波电容器

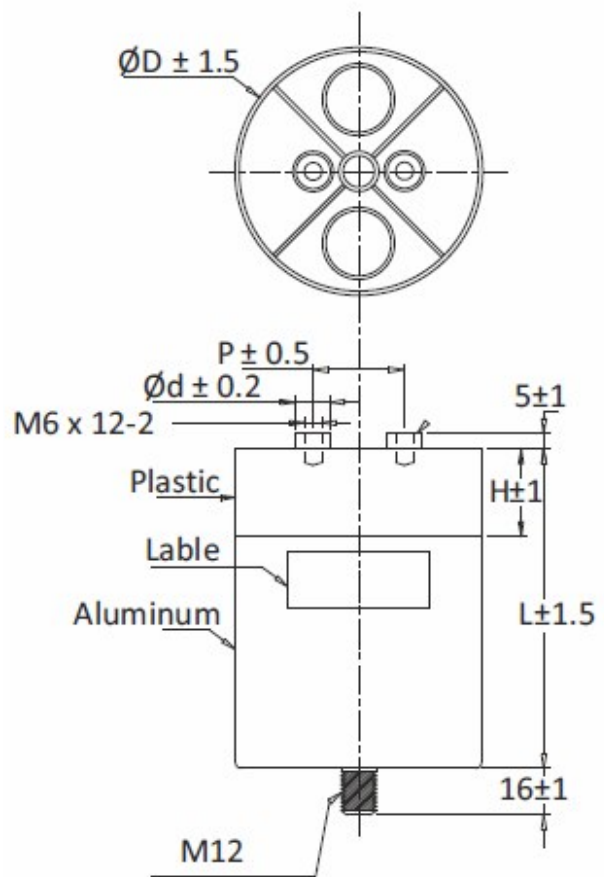
DC-link Film Capacitor (Dry-construction , Aluminum case , Screw connection)

■ 外形图 Outline Drawing

Male screw terminals



Female screw terminals



$\varnothing D$	$\varnothing d$	P	H
76	12	32	25
86	12	45	25
116	14	50	45
136	14	50	45

H: can be changed in pursuance of customer' request .  
(H=45 when rated voltage > 1500Vdc)

# DLL

## DC-Link Applications



### ■ 特点

- 金属化聚丙烯膜,无感卷绕结构,有自愈性。
- 等效串联电阻小,自感小,能承受较大的纹波电流。
- 铝壳 (顶部阻燃塑料), 环氧树脂封装。
- 长寿命

### ■ 典型应用

- 应用于直流滤波电路中,可替代电解电容。
- 风能、太阳能逆变器。
- 交通工具,如电动车和混合动力车。
- 焊接设备,感应加热,电机驱动

### ■ Features

- Metalized Polypropylene film, non-inductive wound construction ,self-healing property.
- Low ESR, high ripple current handling capabilities.
- Aluminum can with preformed UL 94-V0 plastic top with resin-fill.
- Long life time.

### ■ Type Application

- Used in DC-Link circuits,can replace electrolytic capacitor.
- Wind& Solar power Inverter.
- Transportation: EV or HEV
- Welders,Induction heaters Motor Driver systems

### ■ 技术要求 Specifications

引用标准 Reference Standard	GB/T17702,IEC 61071
气候类别 Climatic Category	40/85/56 ( ØD76,ØD86) ; 40/80/56 ( ØD116,ØD136)
工作温度范围 Operating Temperature Range	-40°C~+85°C ( ØD76,ØD86) -40°C~+80°C ( ØD116,ØD136) ;
额定电压 Rated Voltage	700Vdc~3000Vdc
容量范围 Capacitance range	39µF~2300µF
容差 Capacitance tolerance	±5%(J),±10% (K)
Dissipation factor (Tan δ ) 损耗角正切值	≤2×10 <sup>-3</sup> Measured at 100Hz and 20±5°C
耐电压 Voltage Proof (20±5°C)	1.5× U <sub>N</sub> (DC),10s (端子间 between terminals)
	U <sub>N</sub> < 1500Vdc, 3000Vac(10s, 50Hz,20°C±5°C) U <sub>N</sub> ≥1500Vdc,(√2U <sub>N</sub> +1000)Vac(10s,50Hz,20°C±5°C) (极壳间 Between Terminals And Case)
绝缘阻抗 Insulation Resistance	≥5000s (at 100VDC,60s,20~25°C)
最高使用海拔 Max. Altitude	2 000m
最大电极扭矩 Max. Torque of terminals	M6: 5Nm ; M8: 6Nm
最大安装扭矩 Max. Torque of installation	10Nm
安装 Installation	任意方向 Any Position
可靠度 Reliability	工作寿命 Operation life time ≥100 000h at U <sub>N</sub> , θhs ≤70°C
	失效率 Failure rate≤50FIT

\*\* For inquiry of items out of above range or with special dimensions. Please do not hesitate to contact with us for availability.  
不在本目录范围内的特殊规格或尺寸需求, 可联系我们依要求设计。



KWOKTRAN

DLL

DC-Link Applications

产品代码说明 Product Code System

■ 产品料号由20位数字组成，如下：

For example: The part number, comprising 20 digits, is formed as follows.

1	2	3	4	5	6	7	8	9	10	11	12	13	14	15	16	17	18	19	20
G	L	L	3	6	7	J	2	M	S	1	9	F	0	E	1	9	0	0	0

第1位	公司代码 G	Digit 1	Company Code G
第2~3位	产品系列代码 DLL(代码)=LL	Digit 2 to 3	Product series Code DLR =LL
第4~6位	容值代码 举例：367=36×10 <sup>7</sup> pF=360μF	Digit 4 to 6	Rated capacitance value For example : 1367=36×10 <sup>7</sup> pF=360μF
第7位	容量偏差代码 J=±5% ,K=±10%,	Digit 7	Capacitance tolerance Code J=±5% , K=±10%
第8~9位	额定电压代码 2M=700V,2X=900V,2N=1100,2B=1200 3N=1300V,5N=1500,4K=1800,3D=2000 4D=2200V,5D=2400V,3E=2500V,3F=3000	Digit 8 to 9	Rated voltage Code 2M=700V,2X=900V,2N=1100,2B=1200 3N=1100V,5N=1500,4K=1800,3D=2000 4D=2200V,5D=2400V,3E=2500V,3F=3000
第10~11位	外形尺寸代码 Unit (mm)	Digit 10 to 11	Dimension code

ØD	L	code	ØD	L	code	ØD	L	code	ØD	L	code
76	95	S1	86	120	T1	116	130	U1	136	125	V1
	120	S2		125	T2		150	U2		130	V2
	125	S3		130	T3		180	U3		150	V3
	145	S4		145	T4		230	U4		180	V4
	175	S5		175	T5		125	U5		230	V5
	225	S6		225	T6						
			252	T7							

第12位	内部使用码	Digit 12	Design code (only internal use)
第13~14位	引出端代码 螺栓式=M0 螺孔式=F0	Digit 13 to14	Screw terminals code Screw Male terminals=M0 Screw Female terminals=F0
第15~16位	安装形式代码	Digit 15 to 16	Fixing style code

Fix style	code
无安装耳 No mounting ear	E0
低部单安装耳 Single mounting ear in the bottom	E1
底部双安装耳 Doube mounting ear in the bottom	E2
圆柱形铝壳无安装螺栓 Cylindrical AL-case without bolt	A0
圆柱形铝壳无安装螺栓 Cylindrical AL-case with bolt	A1

第17位	内部使用码	Digit 17	Design code (only internal use)
第18~20位	产品版本识别码	Digit 18 to 20	product ID of version

\*\* For inquiry of items out of above range or with special dimensions. Please do not hesitate to contact with us for availability.  
不在本目录范围内的特殊规格或尺寸需求，可联系我们依要求设计。

# DLL

## DC-Link Applications



KWOKTRAN

### ■外形尺寸 Dimensions(mm)

U <sub>N</sub> : 700Vdc, U <sub>s</sub> : 1050Vdc ;U <sub>r</sub> : 200vac									
C <sub>R</sub>	∅D	L	LS	R <sub>th</sub>	î	E.SR@ 1.0KHz	I <sub>rms</sub> @ 45°C	Weight	Part Number
uF	±1.5	±1.5	(nH)	(K/w)	(A)	(mΩ)	(A)	(Kg)	
360	76	95	45	5.6	1560	1.6	65	0.65	GLL367*2MS1▲●●A0▲□□□
480	76	120	50	4.7	1530	2.1	62	0.75	GLL487*2MS2▲●●A0▲□□□
580	76	145	55	4.6	1530	2.4	60	0.8	GLL587*2MS4▲●●A0▲□□□
720	76	175	45	4.2	3120	1.6	65	1.1	GLL727*2MS5▲●●A0▲□□□
650	86	120	50	4.7	2080	1.7	68	1.0	GLL657*2MT1▲●●A0▲□□□
780	86	145	55	4.6	2060	1.9	68	1.2	GLL787*2MT4▲●●A0▲□□□
950	86	175	45	4.3	4120	1.5	70	1.5	GLL957*2MT5▲●●A0▲□□□
1500	86	252	45	3.0	6500	1.1	70	1.8	GLL158*2MT7▲●●A0▲□□□
1200	116	130	50	5.0	3830	1.0	80	1.65	GLL128*2MU1▲●●A0▲□□□
1500	116	150	55	4.9	3950	1.1	80	1.8	GLL158*2MU2▲●●A0▲□□□
1800	116	180	45	3.4	7800	1.0	100	2.4	GLL188*2MU3▲●●A0▲□□□
2300	116	230	50	2.7	11440	0.8	100	2.8	GLL238*2MU4▲●●A0▲□□□

U <sub>N</sub> : 900Vdc, U <sub>s</sub> : 1350Vdc ;U <sub>r</sub> : 200vac									
C <sub>R</sub>	∅D	L	LS	R <sub>th</sub>	î	E.SR@ 1.0KHz	I <sub>rms</sub> @ 45°C	Weight	Part Number
uF	±1.5	±1.5	(nH)	(K/w)	(A)	(mΩ)	(A)	(Kg)	
290	76	95	45	5.6	1530	2.0	60	0.65	GLL297*2XS1▲●●A0▲□□□
390	76	120	60	3.9	1600	3.7	58	0.7	GLL397*2XS2▲●●A0▲□□□
450	76	145	55	4.6	2900	1.3	61	0.85	GLL457*2XS4▲●●A0▲□□□
570	76	175	45	4.2	2960	1.6	61	1.1	GLL577*2XS5▲●●A0▲□□□
520	86	120	50	4.7	2020	2.1	64	1.1	GLL527*2XT1▲●●A0▲□□□
630	86	145	55	4.6	2030	2.4	68	1,2	GLL637*2XT4▲●●A0▲□□□
750	86	175	45	4.3	3920	1.6	70	1.35	GLL757*2XT5▲●●A0▲□□□
1100	86	252	55	3.0	3930	1.3	70	1.8	GLL118*2XT7▲●●A0▲□□□
980	116	130	50	5.0	3810	1.2	78	1.5	GLL987*2XU1▲●●A0▲□□□
1100	116	150	45	3.6	7700	1.0	87	2.1	GLL118*2XU2▲●●A0▲□□□
1500	116	180	45	3.4	7900	1.1	95	2.2	GLL158*2XU3▲●●A0▲□□□
1800	116	230	50	2.7	9200	0.9	100	2.8	GLL188*2XU4▲●●A0▲□□□

\*\* For inquiry of items out of above range or with special dimensions. Please do not hesitate to contact with us for availability.  
不在本目录范围内的特殊规格或尺寸需求, 可联系我们依要求设计。



KWOKTRAN

**DLL**  
DC-Link Applications

■外形尺寸 Dimensions(mm)

U <sub>N</sub> : 1100Vdc, U <sub>s</sub> :1650Vdc ;U <sub>r</sub> :250vac									
C <sub>R</sub>	∅D	L	L <sub>S</sub>	R <sub>th</sub>	↑	E.SR@ 1.0KHz	I <sub>rms@</sub> 45°C	Weight	Part Number
uF	±1.5	±1.5	(nH)	(K/w)	(A)	(mΩ)	(A)	(Kg)	
180	76	95	45	5.6	1400	2.3	55	0.60	GLL187*F2NS1▲●●A0▲□□□
250	76	120	60	3.9	1430	3.6	50	0.7	GLL257*2NS2▲●●A0▲□□□
300	76	145	55	4.6	1400	3.5	50	0.75	GLL307*2NS4▲●●A0▲□□□
360	76	175	45	4.2	2800	2.0	68	1.1	GLL367*2NS5▲●●A0▲□□□
330	86	120	50	4.7	1890	2.4	60	1.1	GLL337*2NT1▲●●A0▲□□□
400	86	145	55	4.6	2040	2.4	58	1,2	GLL407*2NT4▲●●A0▲□□□
500	86	175	45	4.3	3730	1.8	68	1.3	GLL507*2NT5▲●●A0▲□□□
750	86	252	55	3.0	3930	1.3	70	1.8	GLL757*2NT7▲●●A0▲□□□
620	116	125	50	5.0	3550	1.4	75	1.5	GLL627*2NU5▲●●A0▲□□□
750	116	150	55	4.9	3550	1.6	70	2.1	GLL757*2NU2▲●●A0▲□□□
920	116	180	45	3.4	7150	1.1	98	2.2	GLL927*2NU3▲●●A0▲□□□
1200	116	230	50	2.7	10710	0.9	100	2.8	GLL128*2NU4▲●●A0▲□□□

U <sub>N</sub> : 1300Vdc, U <sub>s</sub> :1950Vdc ;U <sub>r</sub> :275vac									
C <sub>R</sub>	∅D	L	L <sub>S</sub>	R <sub>th</sub>	↑	E.SR@ 1.0KHz	I <sub>rms@</sub> 45°C	Weight	Part Number
uF	±1.5	±1.5	(nH)	(K/w)	(A)	(mΩ)	(A)	(Kg)	
120	76	95	45	5.6	1310	2.9	50	0.60	GLL126*3NS1▲●●A0▲□□□
170	76	120	50	4.7	1360	3.7	49	0.7	GLL177*3NS2▲●●A0▲□□□
210	76	145	55	4.6	1400	4.1	46	0.75	GLL217*3NS4▲●●A0▲□□□
240	76	175	45	4.2	2620	2.3	64	1.1	GLL247*3NS5▲●●A0▲□□□
230	86	120	50	4.7	1840	2.8	55	1.1	GLL237*3NT1▲●●A0▲□□□
270	86	145	55	4.6	1780	3.3	51	1,2	GLL277*3NT4▲●●A0▲□□□
320	86	175	45	4.3	3490	1.9	68	1.3	GLL327*3NT5▲●●A0▲□□□
520	86	252	55	3.0	5670	1.5	70	1.8	GLL527*3NT7▲●●A0▲□□□
430	116	125	50	5.0	3440	1.6	70	1.5	GLL437*3NU5▲●●A0▲□□□
520	116	150	55	4.9	3430	1.8	66	2.1	GLL527*3NU2▲●●A0▲□□□
630	116	180	45	3.4	6760	1.2	96	2.2	GLL637*3NU3▲●●A0▲□□□
820	116	230	50	2.7	10100	0.9	100	2.8	GLL827*3NU4▲●●A0▲□□□

\*\* For inquiry of items out of above range or with special dimensions. Please do not hesitate to contact with us for availability.  
不在本目录范围内的特殊规格或尺寸需求，可联系我们依要求设计。

# DLL

## DC-Link Applications



KWOKTRAN

### ■外形尺寸 Dimensions(mm)

U <sub>N</sub> : 1500Vdc, U <sub>s</sub> : 2250Vdc ;U <sub>r</sub> : 330vac									
C <sub>R</sub>	∅D	L	L <sub>S</sub>	R <sub>th</sub>	î	E.SR@ 1.0KHz	I <sub>rms</sub> @ 45°C	Weight	Part Number
uF	±1.5	±1.5	(nH)	(K/w)	(A)	(mΩ)	(A)	(Kg)	
90	76	95	45	5.6	1220	3.3	46	0.60	GLL906*F5NS1▲●●A0▲□□□
120	76	120	50	4.7	1200	4.4	44	0.70	GLL127*5NS2▲●●A0▲□□□
150	76	145	55	4.6	1230	4.9	43	0.75	GLL157*5NS4▲●●A0▲□□□
170	76	175	45	4.2	2310	2.5	62	0.9	GLL177*5NS5▲●●A0▲□□□
170	86	120	50	4.7	1690	3.3	51	1.0	GLL177*5NT1▲●●A0▲□□□
200	86	145	55	4.6	1720	3.0	54	1,2	GLL207*5NT4▲●●A0▲□□□
240	86	175	45	4.3	3260	2.1	65	1.3	GLL247*5NT5▲●●A0▲□□□
380	86	252	55	3.0	5080	1.5	70	1.8	GLL387*5NT7▲●●A0▲□□□
320	116	125	50	5.0	3180	1.9	65	1.5	GLL327*5NU5▲●●A0▲□□□
400	116	150	55	4.9	3280	1.4	65	1.8	GLL407*5NU2▲●●A0▲□□□
470	116	180	45	3.4	6280	1.3	85	2.2	GLL477*5NU3▲●●A0▲□□□
600	116	230	50	2.7	9200	1.0	95	2.8	GLL607*5NU4▲●●A0▲□□□

U <sub>N</sub> : 2000Vdc, U <sub>s</sub> : 3000Vdc ;U <sub>r</sub> : 400vac									
C <sub>R</sub>	∅D	L	L <sub>S</sub>	R <sub>th</sub>	î	E.SR@ 1.0KHz	I <sub>rms</sub> @ 45°C	Weight	Part Number
uF	±1.5	±1.5	(nH)	(K/w)	(A)	(mΩ)	(A)	(Kg)	
75	76	120	60	3.9	1100	8.4	22	0.70	GLL756*3DS2▲●●A0▲□□□
100	86	120	60	3.5	1400	6.3	27	1.0	GLL107*3DT1▲●●A0▲□□□
150	86	175	50	2.4	2900	2.6	51	1.3	GLL157*3DT5▲●●A0▲□□□
200	86	252	60	1.8	2800	3.3	52	1.8	GLL207*3DT7▲●●A0▲□□□
220	116	150	45	2.5	5500	1.4	65	2.1	GLL227*3DU2▲●●A0▲□□□
280	116	180	50	2.1	5300	1.6	64	2.4	GLL287*3DU3▲●●A0▲□□□
380	116	230	60	1.7	5300	1.8	65	2.8	GLL387*3DU4▲●●A0▲□□□
270	136	125	60	2.5	3900	2.4	40	2.3	GLL277*3DV1▲●●A0▲□□□
400	136	180	50	1.9	7600	1.4	71	3.3	GLL407*3DV4▲●●A0▲□□□
540	136	230	60	1.5	7600	1.3	72	4.2	GLL547*3DV5▲●●A0▲□□□

\*\* For inquiry of items out of above range or with special dimensions. Please do not hesitate to contact with us for availability.  
不在本目录范围内的特殊规格或尺寸需求，可联系我们依要求设计。



KWOKTRAN

DLL  
DC-Link Applications

■外形尺寸 Dimensions(mm)

U <sub>N</sub> : 2500Vdc, U <sub>s</sub> : 3750Vdc ;U <sub>r</sub> : 600vac									
C <sub>R</sub>	∅D	L	L <sub>S</sub>	R <sub>th</sub>	Ĥ	E.SR@ 1.0KHz	I <sub>rms@</sub> 45°C	Weight	Part Number
uF	±1.5	±1.5	(nH)	(K/w)	(A)	(mΩ)	(A)	(Kg)	
63	86	145	65	4.5	1730	4.1	40	1.1	GLL636*3ET4▲●●A0▲□□□
100	86	225	60	3.2	3370	2.1	66	1.7	GLL107*3ET6▲●●A0▲□□□
95	116	130	45	2.5	1500	3.0	43	1.8	GLL956*3EU1▲●●A0▲□□□
200	116	230	60	1.7	1600	4.4	42	3.0	GLL207*3EU4▲●●A0▲□□□
130	136	130	60	2.4	2100	1.9	47	2.5	GLL137*3EV2▲●●A0▲□□□
280	136	230	60	1.5	2200	5.4	46	4.2	GLL287*3EV5▲●●A0▲□□□

U <sub>N</sub> : 3000Vdc, U <sub>s</sub> : 4500Vdc ;U <sub>r</sub> : 700vac									
C <sub>R</sub>	∅D	L	L <sub>S</sub>	R <sub>th</sub>	Ĥ	E.SR@ 1.0KHz	I <sub>rms@</sub> 45°C	Weight	Part Number
uF	±1.5	±1.5	(nH)	(K/w)	(A)	(mΩ)	(A)	(Kg)	
39	76	175	50	2.7	900	13.9	21	1.0	GLL396*3FS5▲●●A0▲□□□
56	76	225	60	2.0	1100	17.4	22	1.2	GLL566*3FS6▲●●A0▲□□□
47	86	145	45	2.9	1500	7.4	28	1.0	GLL476*3FT4▲●●A0▲□□□
82	86	225	60	1.8	1600	12	27	1.5	GLL826*3FT6▲●●A0▲□□□
68	116	130	45	2.8	2400	3.6	40	1.8	GLL686*3FU1▲●●A0▲□□□
100	116	180	60	2.1	2400	5.6	37	2.3	GLL107*3FU3▲●●A0▲□□□
150	116	230	60	1.7	3000	6.7	38	2.9	GLL157*3FU4▲●●A0▲□□□
180	136	230	60	1.0	3600	5.6	54	4.2	GLL187*3FV5▲●●A0▲□□□

备注:

1. “\*” 表示容量误差。 “\*” = capacitance tolerance code, J=±5%, K=±10%, M=±20%.
2. “▲” 表示内部特征码 “■” = Internal use.
3. “●●” 表示引出端代码 “●●” screw terminals code
4. “□□□” 表示产品版本识别码 “□□□” = product ID of version
5. “I<sub>max</sub>” 是指在环境温度下45°C的最大电流有效值。在这种条件下,热点温度将达到最大值。  
“I<sub>max</sub>” = Maxium r.m.s current at θ<sub>amb</sub> (45°C). θ<sub>hs</sub> will reach the maximum value on this condition.
6. “R<sub>th</sub>” 是指在自然冷却条件下, 电容器热点到环境的热阻。  
“R<sub>th</sub>” = R<sub>th</sub> between hot spot and ambient on natural cooling condition.
7. θ<sub>ehs</sub> = θ<sub>amb</sub> + I<sub>rms</sub><sup>2</sup> × ESR × R<sub>th</sub>.
8. 顾客还可以选用带底部螺性或者不带底部螺性 M12 的电容器。  
Customers also can choose the capacitor with or without the bottom bolt M12.

\*\* For inquiry of items out of above range or with special dimensions. Please do not hesitate to contact with us for availability.  
不在本目录范围内的特殊规格或尺寸需求, 可联系我们依要求设计。